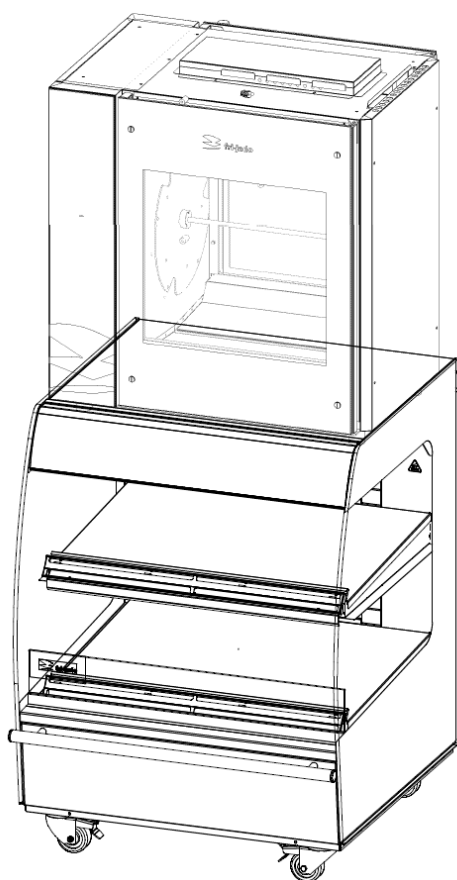


USER MANUAL

European Model	MDS 86-2
American Model	MDS 34-2

**WARNING**

Read the instructions before using the machine.

KEEP THIS USER MANUAL FOR FUTURE USE

© 2020 Fri-Jado B.V., Oud Gastel, The Netherlands.

We advise you to contact your supplier for the guarantee period and conditions. Further we refer to our General Terms and Conditions for Sales and Delivery that are available upon request.

The manufacturer does not accept any liability for damage or injury caused by failing to adhere to these regulations or by not observing the usual caution or care in actions, operation, maintenance or repair activities, even if not explicitly described in this manual.

As a result of constant commitment to improvement, it may happen that your unit deviates in detail from what is described in this manual. For this reason, the given instructions are only a guideline for the installation, use, maintenance and repair of the unit referred to in this manual. This manual has been composed with the utmost care. The manufacturer shall, however, not be held responsible for any mistakes in this manual nor for any consequences thereof. The user is allowed to copy this manual for own use. Further all rights are reserved and nothing in this manual may be reproduced and/or made public in any way.

Modifications:

In case of unauthorized modifications in or on the unit, every liability on the part of the manufacturer becomes null and void.

Empty page.

CONTENTS

1.	INTRODUCTION	5
1.1	General.....	5
1.2	Identification of the unit	5
1.3	Pictograms and symbols	5
1.4	Safety instructions	6
1.4.1	General.....	6
1.4.2	Moving.....	7
1.5	Hygiene	7
1.6	Service and technical support	7
1.7	Storage.....	7
1.8	Disposal.....	7
2.	DESCRIPTION OF THE UNIT	8
2.1	Technical description	8
2.2	Intended use	8
2.3	Accessories	8
3.	INSTALLATION	9
3.1	Unpacking the unit	9
3.2	Installation and positioning	10
3.3	Placing TDR on MDS.....	10
4.	OPERATION AND USE	11
4.1	Switching on	11
4.2	Checking the temperature in the unit	12
4.3	Checking the product temperature	12
4.4	Switching off	12
5.	DAILY MAINTENANCE.....	13
6.	MALFUNCTIONS AND SERVICE	14
6.1	Temperature fault	14
6.2	Replacing a lamp	15
6.3	Placing a price strip	16
6.4	Replacing the child guard	16
6.5	Replacing the mains cord	16
7.	TECHNICAL SPECIFICATIONS	17
8.	ACCESSORIES.....	18

1. INTRODUCTION

1.1 General

This manual is intended for the user of the MDS (Multi Deck). The features and controls are being described, along with directions for the safest and most efficient use, in order to guarantee a long life of the unit.

All pictograms, symbols and drawings in this manual apply to all MDS models.

1.2 Identification of the unit

The identification plate can be found on the outside of the machine, and contains the following data:

- Name of the supplier or the manufacturer
- Model
- Serial number
- Year of construction
- Voltage
- Frequency
- Power consumption

1.3 Pictograms and symbols

In this manual, the following pictograms and symbols are used:



WARNING

Possible physical injury or serious damage to the unit, if the instructions are not carefully followed.



WARNING

Hazardous electrical voltage.



WARNING

Danger of getting injured by hot surfaces.



Suggestions and recommendations to simplify indicated actions.



Recycling symbol.



Direction of view symbol.

1.4 Safety instructions



WARNING

The top and bottom of the trays and columns at the back of the unit can be very hot.



WARNING

The maximum load on top of the unit may never exceed 160 kg (352 lbs).



WARNING

The maximum load per shelf may never exceed 35 kg (77 lbs).



WARNING

Risk of slippery floor: Spills may cause slippery surfaces, clean-up promptly.



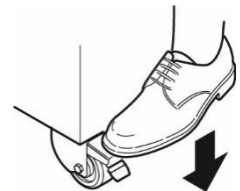
WARNING

See installation instructions for grounding requirements.



WARNING

Always use the brakes on both front wheels:



1.4.1 General

The user of the unit will be fully responsible for abiding the locally prevailing safety- rules and regulations.

The pictograms, labels, instructions and warning signs attached to the unit, are part of the safety measures. They may never be covered or removed, and have to be clearly visible during the entire lifetime of the unit.

Immediately repair or replace damaged or illegible pictograms, warnings and instructions.

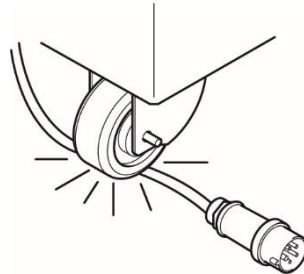
- Only pack the products in bags or containers that are suitable for this purpose.¹
- To ensure good contact with the heated trays, only place a single layer of products.
- Make sure that the air slot at the front of the shelf remain free from obstructions.
- The unit must be cleaned regularly to ensure proper functioning.
- To avoid short-circuiting, never clean the unit using a water hose. For cleaning instructions, see section 5.
- This appliance can be used by children aged from 8 years and above and persons with reduced physical, sensory or mental capabilities or lack of experience and knowledge if they have been given supervision or instruction concerning use of the appliance in a safe way and understand the hazards involved.
- Children shall not play with the appliance.
- Cleaning and user maintenance shall not be made by children without supervision.

¹ The packaged material used must be heat resistant to at least 95 °C (203 °F)

1.4.2 Moving

When moving the unit:

- Before moving the unit, first switch off the mains voltage by pulling the plug from the wall socket.
- To avoid damage, remove the lower skirts when necessary.
- The units are not suited to pass ledges or obstacles higher than 10 mm (0.4 inch).
- Make sure that the wheels can move freely, so they never touch the power lead.



1.5 Hygiene

The quality of a fresh product always depends on hygiene.

It is essential that products are packaged immediately after preparation. At that moment, the core temperature of the products should at least be 85°C (185°F).



Immediately remove products in damaged packaging from the equipment. Clean all components that have come in contact with products from damaged packaging. Refer to section 5.

1.6 Service and technical support

The electrical schematic(s) of your unit are included. In case of malfunctions you can contact your dealer/service agent. Make sure you have the following data available:

- Model.
- Serial number.

This data can be found on the identification plate.

1.7 Storage

If the unit will not be used temporarily, and will be stored, follow these instructions:

- Clean the unit thoroughly.
- Wrap the unit from getting dusty.
- Store the unit in a dry, non-condensing environment.

1.8 Disposal



Dispose of the machine, any components or lubricants removed from it safely in accordance with all local and national safety and environment requirements.

2. DESCRIPTION OF THE UNIT

2.1 Technical description

The MDS uses convection heat. Materials on the unit is made of stainless or coated steel and shatter-resistant clear side glass.

Space Saver

This unit is especially designed to support the TDR5 Rotisserie. This rotisserie can be mounted with loading side to the front side or to the back side of the MDS. The power supply cord connection of the TDR is positioned in the MDS.

2.2 Intended use

The MDS has been designed maintain products at a minimum temperature at 65°C (150°F) for up to four hours. Any other use will not be regarded as intended use.

The manufacturer accepts no liability whatsoever for loss or injury caused by failing to strictly adhere to the safety guidelines and instructions in this manual or due to carelessness during installation, use, maintenance and repair of the unit referred to in this manual and any of its accessories.

Use the unit in perfect technical condition only.

2.3 Accessories

Your unit contains the following standard accessories:

- User manual.

For optional accessories refer to section 8.

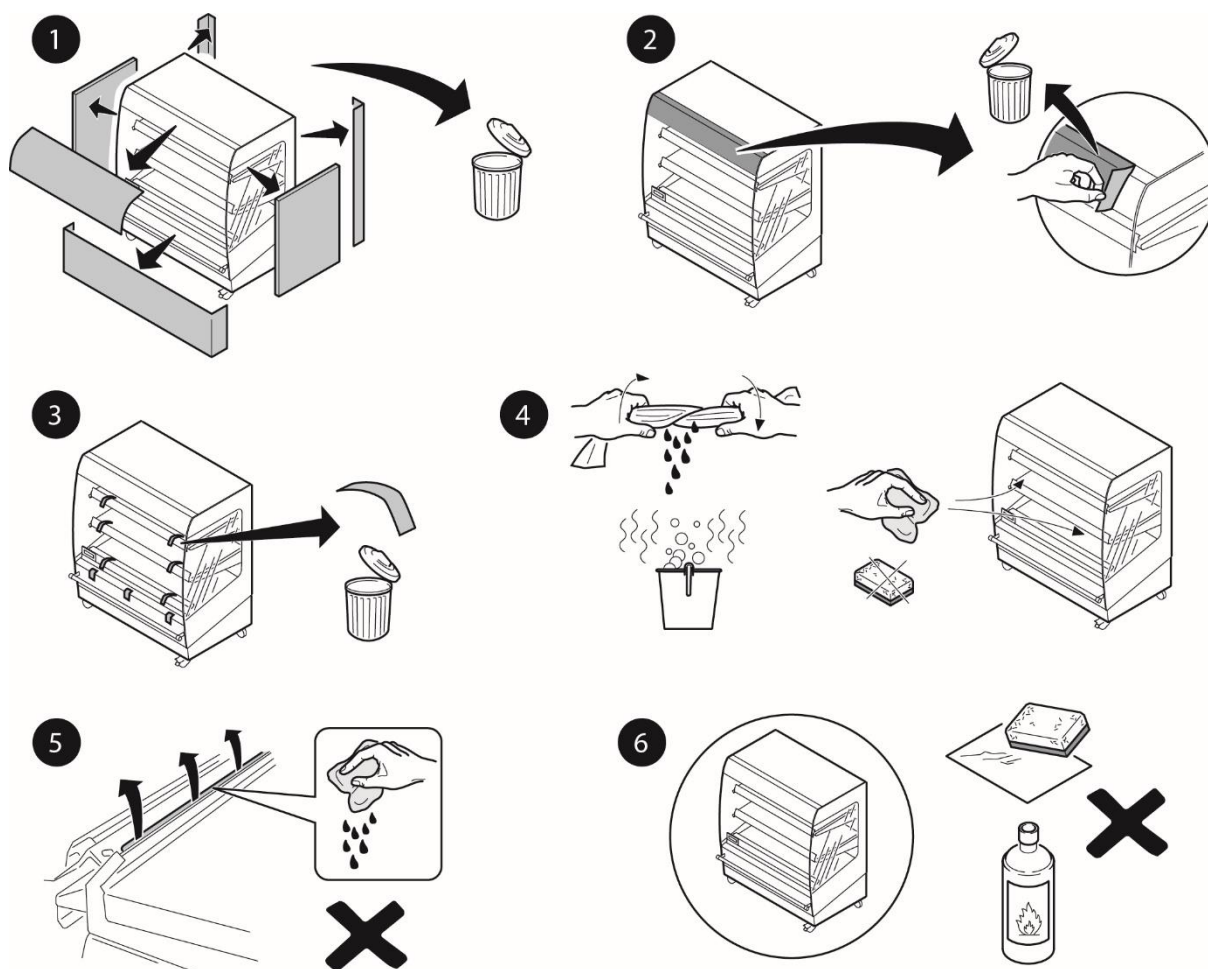
3. INSTALLATION



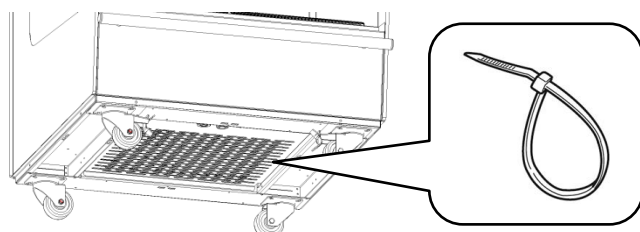
All packing materials used for this unit are suited for recycling.

After unpacking, check the state of the unit. In case of damage, store the packing material, and contact the transporter within fifteen working days after receiving the goods.

3.1 Unpacking the unit



1. Remove all packaging materials from the unit.
2. Remove the foil from the illuminated sign, shelves and child guard.
3. Remove all temporary tape.
4. Before starting to use the unit, clean the inside with a damp cloth.
5. Avoid excessive use of water on the shelves. Make sure no water goes into the air slots.
6. Clean the side glass both inside and out. Avoid scratches on all plastic and varnished parts, do NOT use aggressive detergents.



3.2 Installation and positioning



WARNING

Electric chock hazard. Grounding instructions: only connect the appliance to an alternating current provided by a grounded wall socket, with a mains voltage in accordance with the information indicated on the data plate of the appliance.

It is the consumer's responsibility to make sure the electrical installation conforms with current national and local codes and wiring regulations.

Do not use a multi plug or extension cord. Such can result in fire, electrical shock, or other personal injury.

Failure to follow these instructions can result in death or serious injury.



WARNING

Position the unit on a flat and horizontal surface. A temporally inclined plane of maximum 5° is allowed.

- Place the unit level on a sufficiently sturdy floor. Keep the weight of the unit in mind. Use a levelling instrument to level the unit to water level.
- Be sure that the personnel have sufficient room to work with the unit.
- Keep a distance of at least 400 mm (16 inch) between the back wall and the unit.
- While positioning, keep the unit out of children's reach.
- Do not position a unit near a doorway, a ventilation device or a refrigerator in order to avoid any negative effects on the unit's operation by a cold airflow. The unit is designed for a maximum draft of 0.2 m/s (0.65 ft./sec).
- Do not place into direct sunlight.
- The unit has a mains plug, and must be connected to a wall socket with the proper mains voltage. The wall socket must be mounted by a certified electrician.
- Keep the plinth free from any obstacles to ensure ventilation.

3.3 Placing TDR on MDS



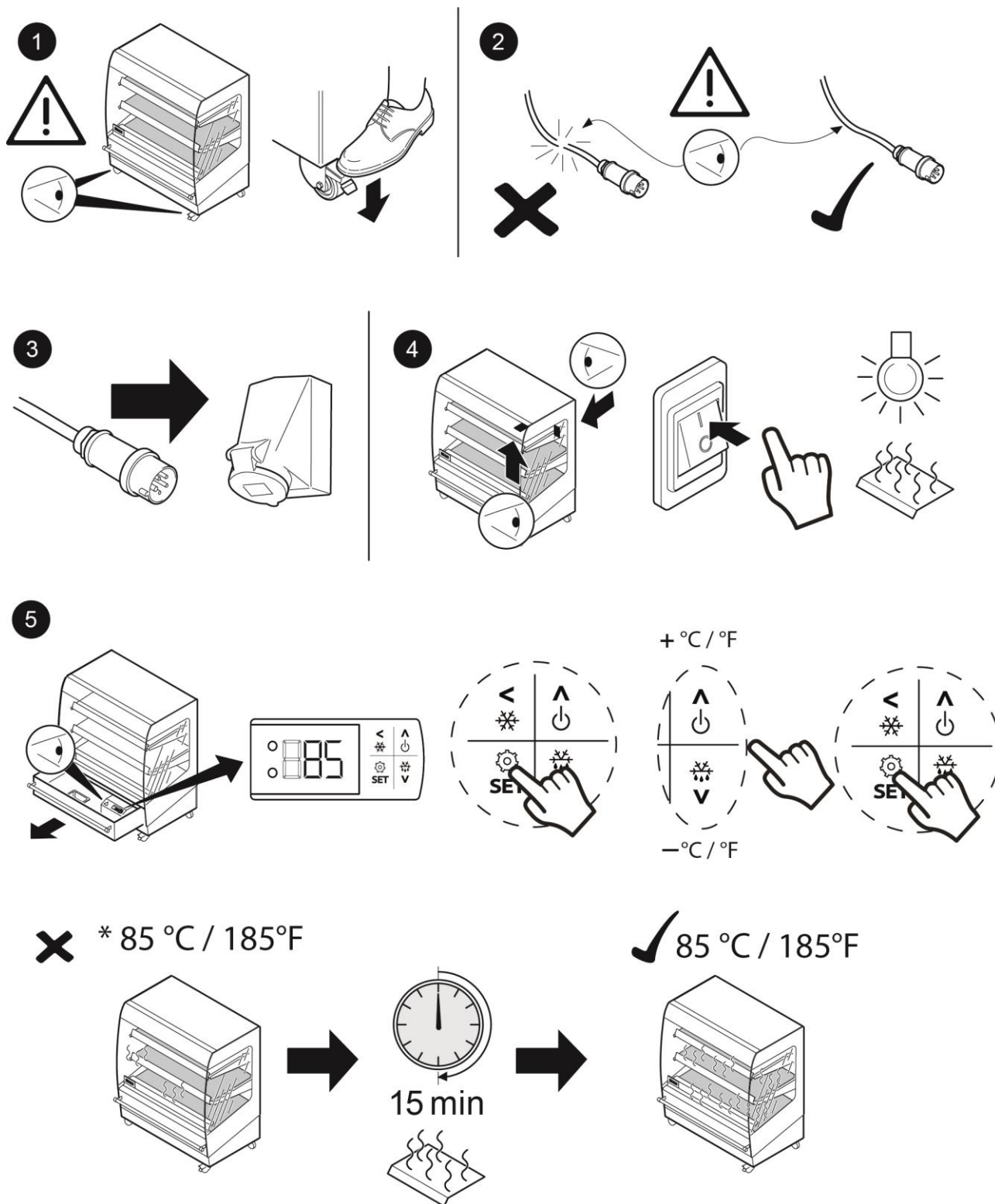
WARNING

Position the unit on a flat and horizontal surface. A temporally inclined plane of maximum 5° is allowed.

Refer to installation instruction 9124088 for placing and connecting the TDR on the MDS.

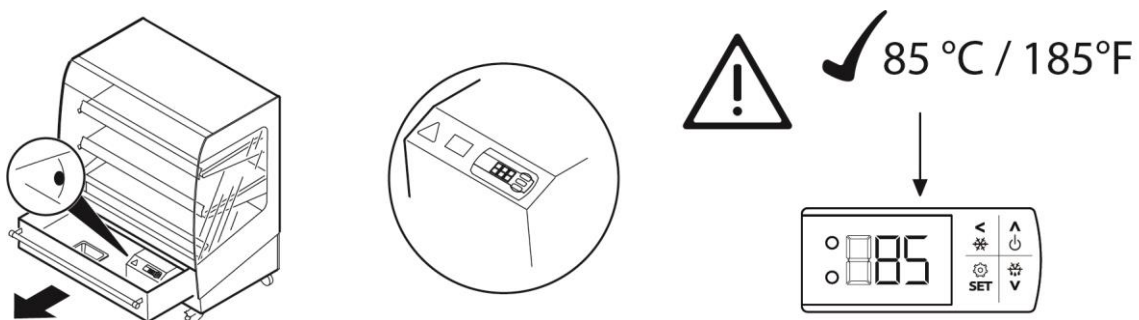
4. OPERATION AND USE

4.1 Switching on

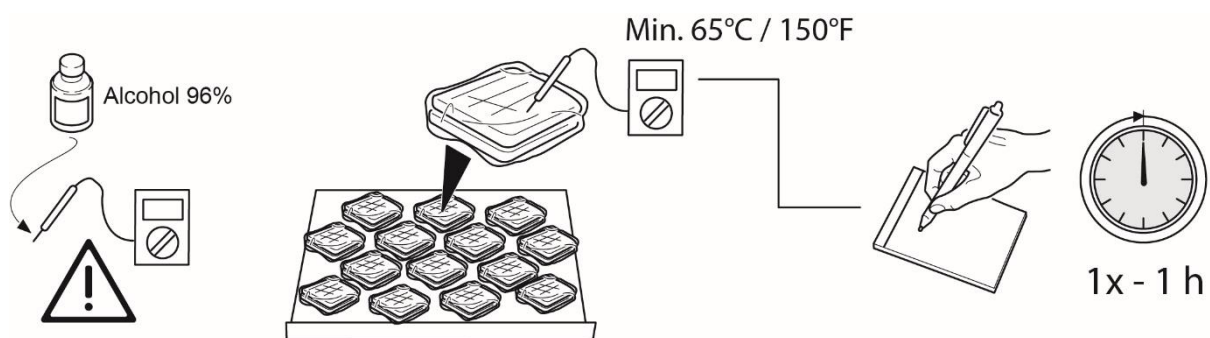


Note: Depending on execution can the heating and lighting be switched separately.

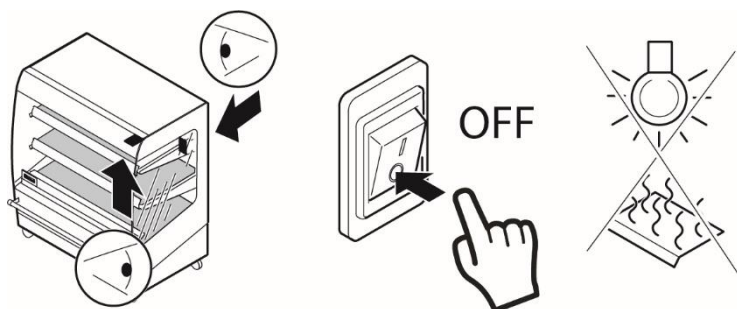
4.2 Checking the temperature in the unit



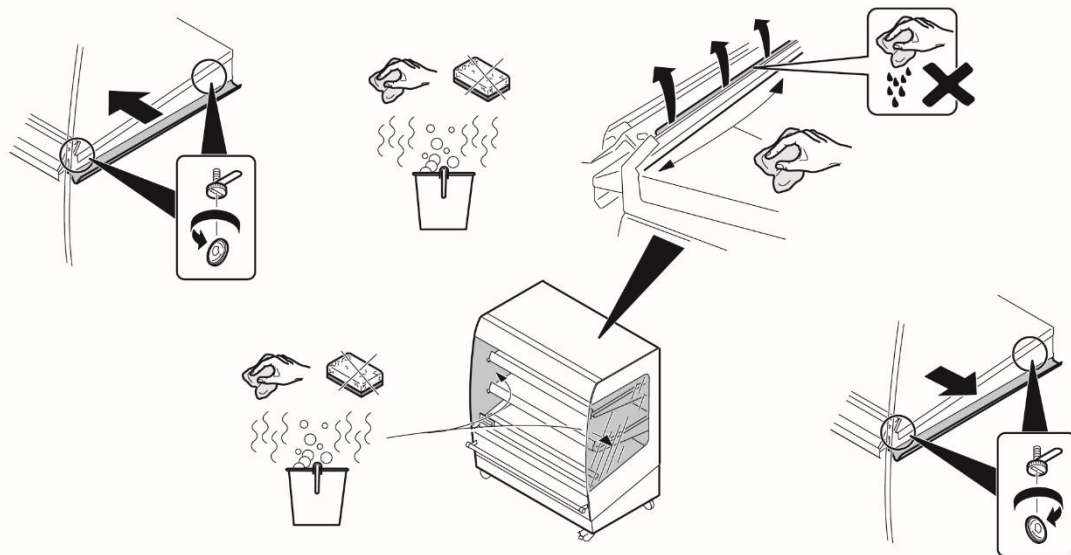
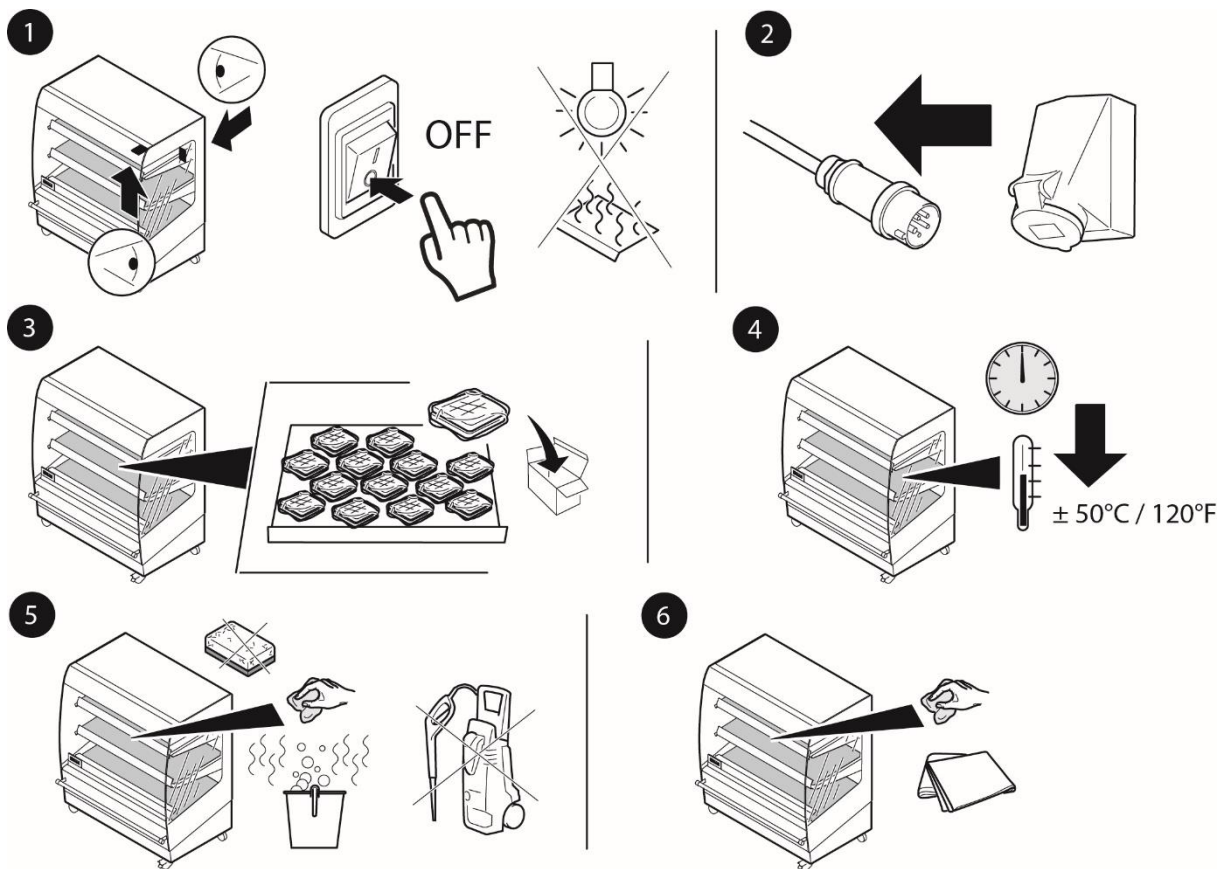
4.3 Checking the product temperature



4.4 Switching off



5. DAILY MAINTENANCE



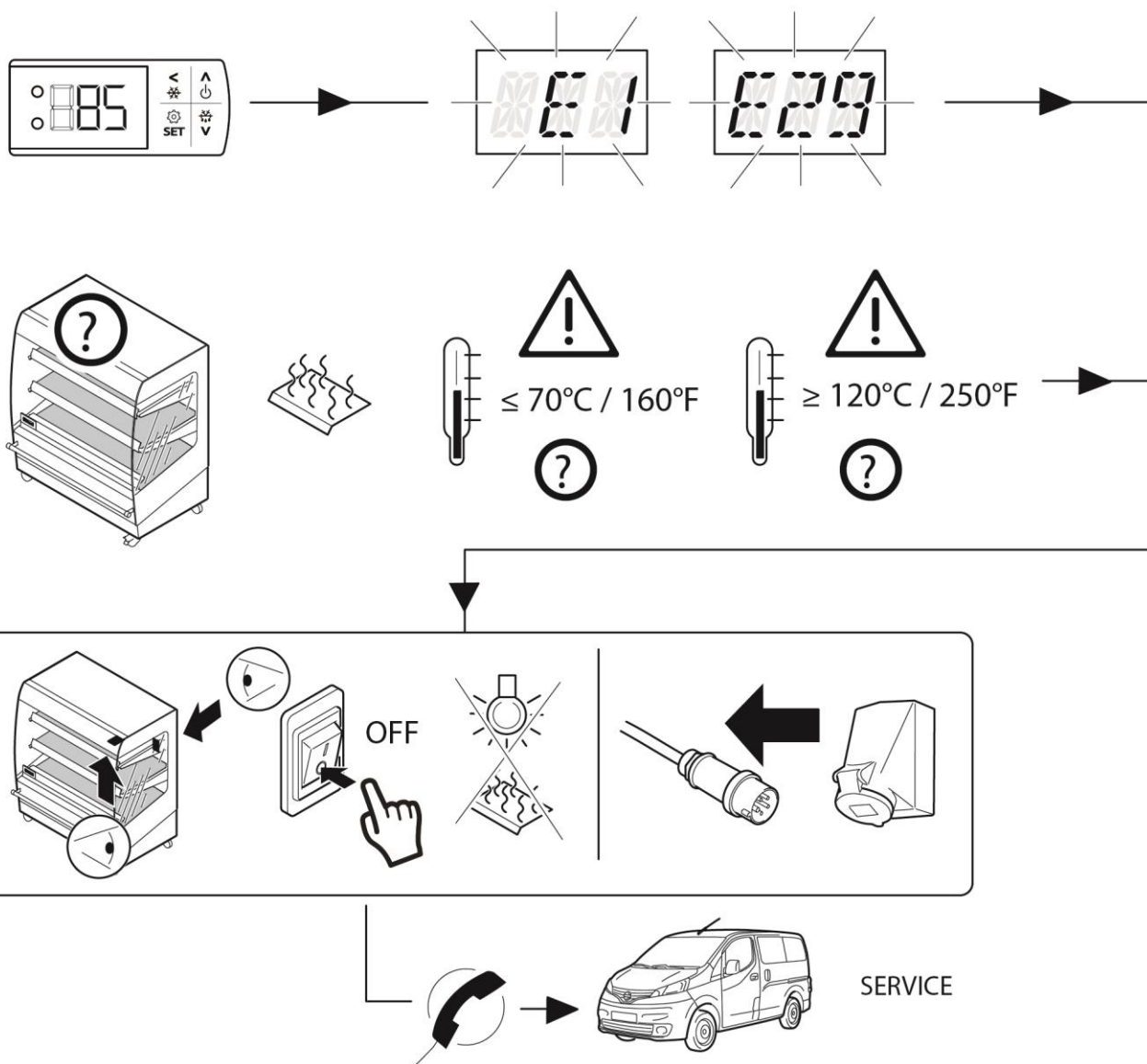
6. MALFUNCTIONS AND SERVICE



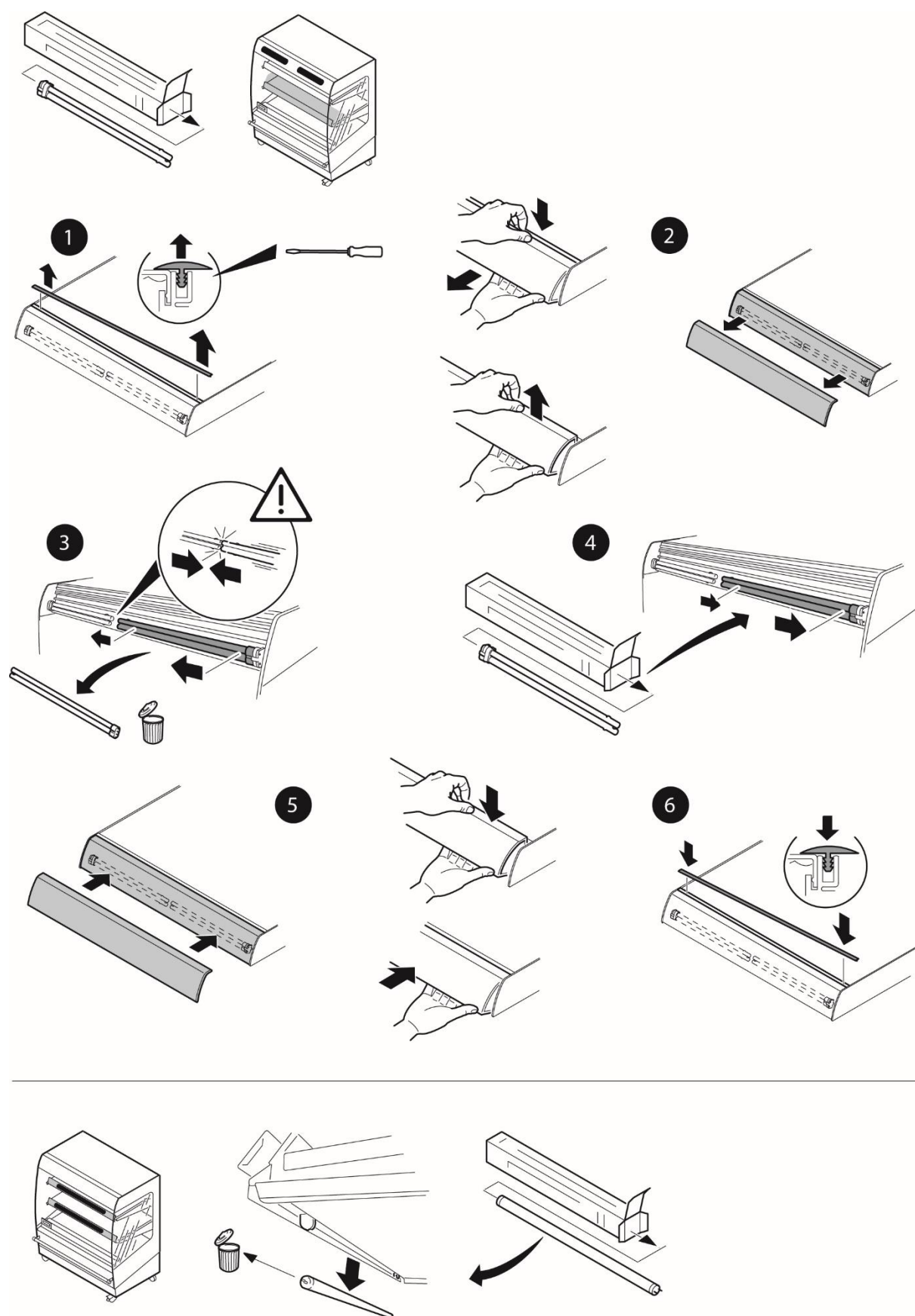
WARNING

This group of appliances has multiple power supply cords.
Disconnect all power supply cords before moving or servicing this appliance.

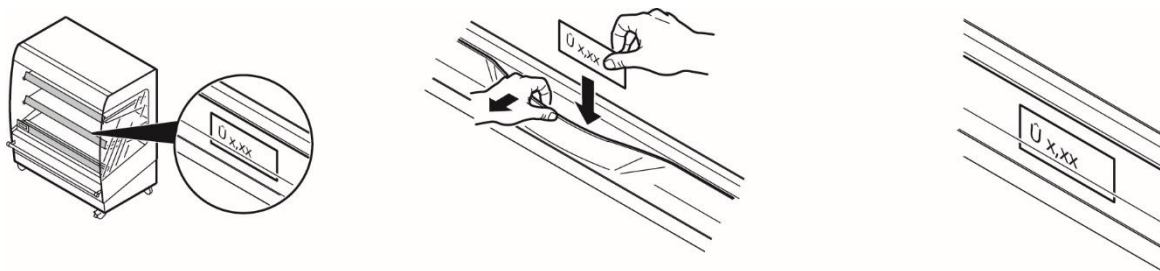
6.1 Temperature fault



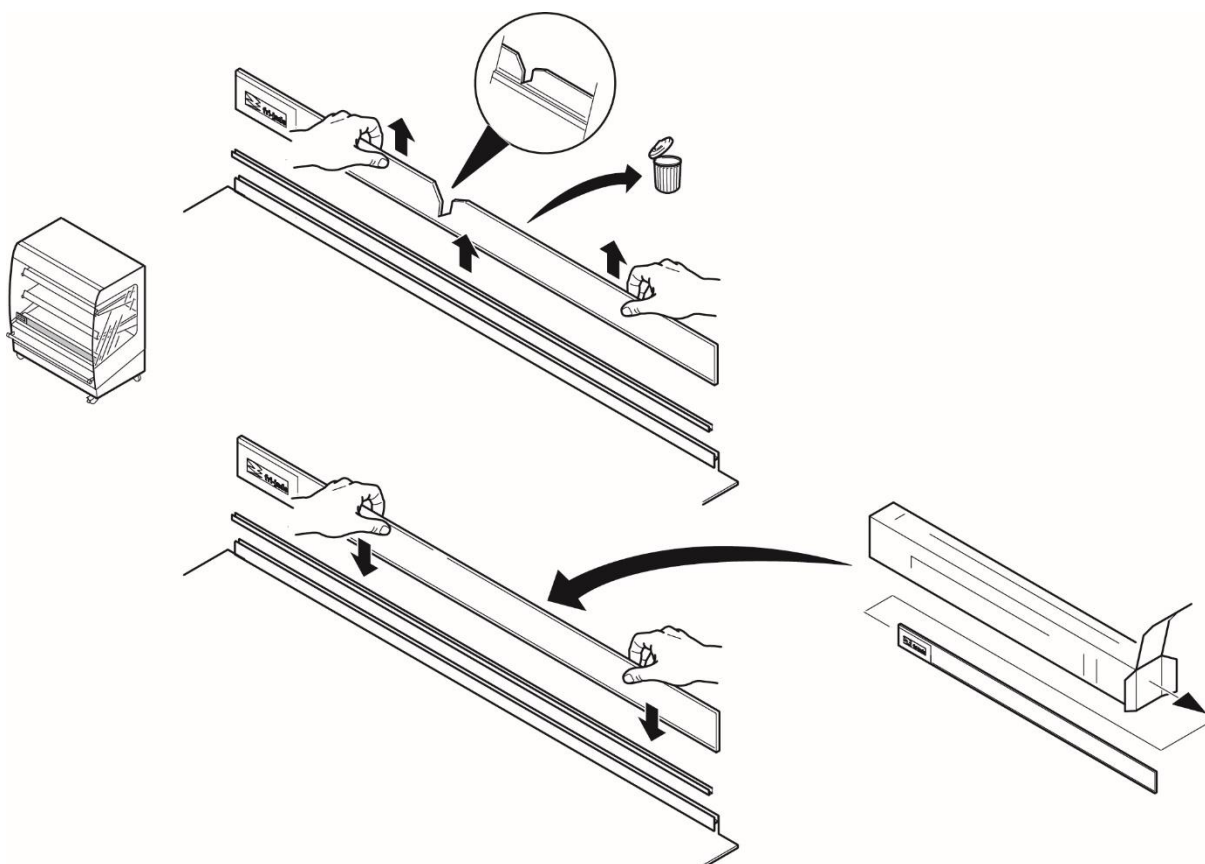
6.2 Replacing a lamp



6.3 Placing a price strip



6.4 Replacing the child guard



6.5 Replacing the mains cord



WARNING

Hazardous electrical voltage.

If the mains cord is damaged, it must be replaced by the manufacturer, by an authorized service agent or a similarly qualified person in order to avoid hazards.

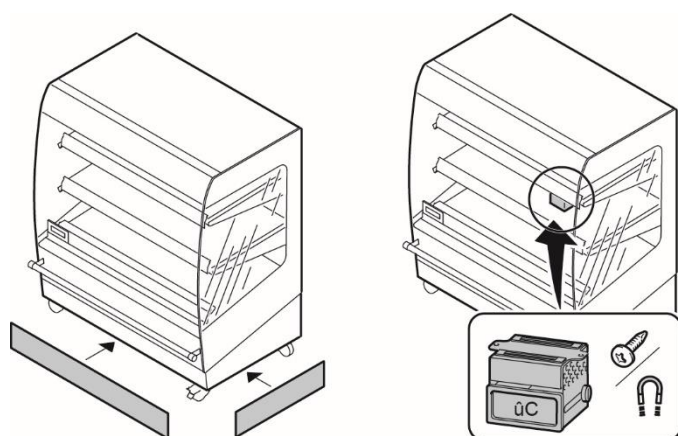
7. TECHNICAL SPECIFICATIONS


WARNING

Consult the identification plate to get the proper specifications of the unit. The electrical data may vary from country to country.

	European model	American Model	
Model	MDS86-2	MDS34-2	
Dimensions			
- Width	860 mm	34 inch	
- Depth	920 mm	36 ¼ inch	
- Height	1145 mm	45 inch	
Weight Net approx.	180 kg	397 lbs	
Sound pressure	< 70 dB(A)	< 70 dB(A)	
Electrical installation			
Voltage	1N~ 230V	1~ 208V	3~ 208V
Frequency	50/60 Hz	50/60 Hz	50/60 Hz
Max. Rated current	13.1 A	14.5 A	9.5 A
Plug	16A 2 pole + PE	NEMA 6-20P	NEMA 15-20P
Power cord length approx.	2.4 m	10 ft.	10 ft.

8. ACCESSORIES



Notes.

Fri-Jado Inc.
1401 Davey Road, Suite 100
Woodridge IL 60517
USA
Tel: +1-630-633-7950

www.frijado.com