

Exchange GAS type of USA TDR-GAS models:

Parts involved	Picture item no.	NG to Propane	Propane to NG
Burner Controller	106	9293049	9293044
Orifice (3.4 mm)	102	9174492	
Orifice (4.2 mm)			9174498
Sticker Propane Gas		9124005	
Sticker Natural Gas			9124006
Additional Data Plate		*	*
Venturi plug	112	9293046	9293046

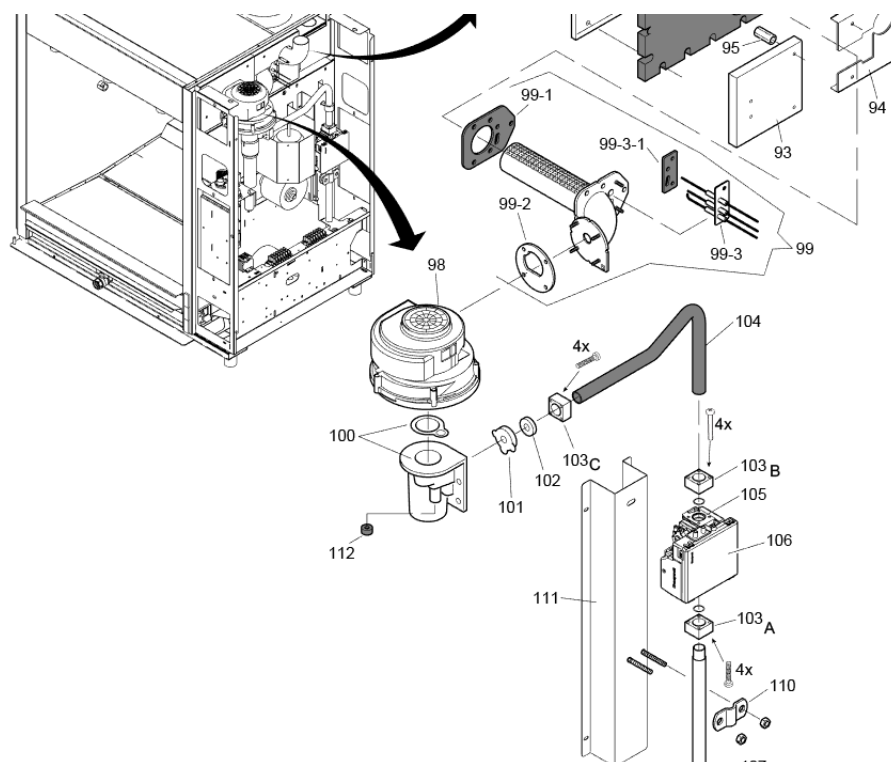
* Per exchange set a unique number.

Test Equipment:

Exhaust flue gas meter (e.g. Testo 330-1) with valid calibration.

Preparation:

1. Disconnect the unit from mains supply.
2. Disconnect gas connection.
3. Remove right side panel (4 Screws).



Exchange orifice:

4. Disconnect the metal shielded hose (item 104) from the orifice holder (item 103).
5. Disconnect orifice holder by removing the 4 screws. Note how the orifice and rubber holder are placed.
6. Remove orifice (item 102) from rubber holder (item 101).
7. Add new orifice into rubber holder (item 101).
8. Place the orifice rubber into the orifice holder.
9. Replace the orifice holder on the venturi (item 100).
10. Seal the orifice.

Exchange burner controller:

11. Disconnect the ignition connections (fastons) on top of the controller (item 106).
12. Open the connector cover (remove the screw).
13. Disconnect the electrical connectors (2 off).
14. Disconnect the controller from the valve sideways.
15. Place the new controller on the valve. Take care of the fragile connection pins!
16. Place the electrical connectors.
17. Close the cover (this fixes also the controller on the valve).
18. Reconnect the ignition connections (note: the faston sizes are different).

Stickers:

19. Remove current gas type side sticker (Natural Gas or Propane Gas).
20. Apply new Gas type side sticker (p/n 9124006 (Natural Gas) or 9124005 (Propane Gas)).
21. Apply new additional data plate near the current data plate. Take a picture after placing of the current and new data plate together. Send this to craig.dean@frijado.com.

Fine tuning procedure:


22. Remove the venture plug (item 112).
23. Apply the gas supply and open the supply valves. Verify the connection on leak tightness.
24. Apply the electrical energy to the unit.
25. Switch on the unit.
26. Close the (gas) adjustment screw of the venture.
27. Turn the adjustment screw counter clockwise:

Gas	Revolutions (360°)	
Natural (G20)	8	(7 — 9)
Propane (G31)	2.5	(2 — 3)

28. Verify the gas pressure: Natural Gas 20 mbar / Propane Gas 37 mbar.
29. Start a grill program.
30. Adjust the venture:

Execution	Test Gas
Natural	G20
Propane	G31

USA (115V)		
Min. CO2	Max. CO2	Nom. kW
8.7 %	8.9 %	14.7
11.25 %	11.45 %	14.7

31. Seal the adjustment screw with the plug 9293046 () and seal it.